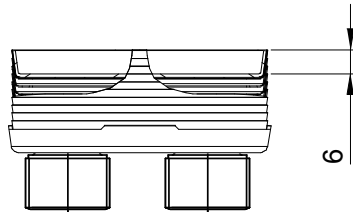
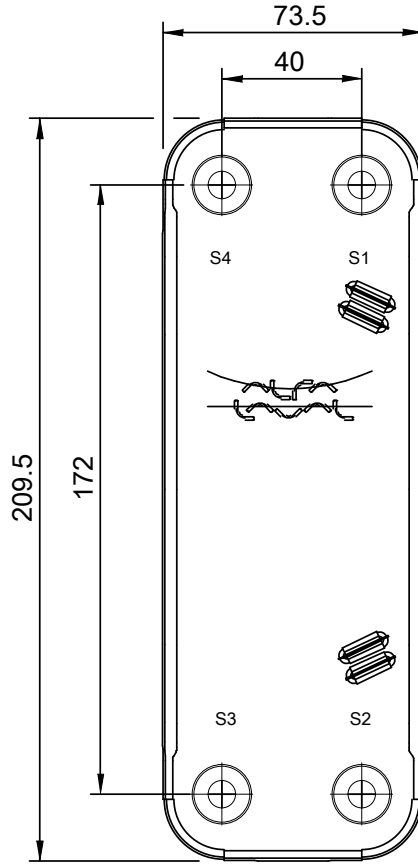
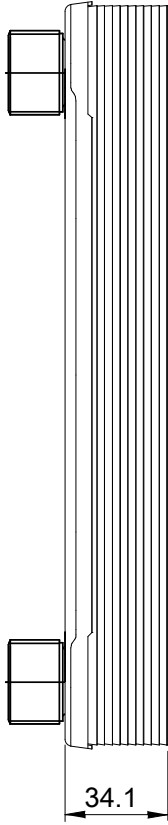
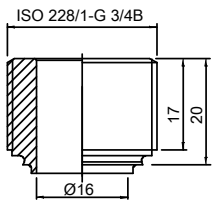


Note that all unique customer requirements (i.e tolerance) need to be verified thru Alfa Laval.

Z 31  
Alloy 316  
S1,S2,S3,S4



HEATING SURFACE  
NETWEIGHT 0.96 kg  
OPERATING WEIGHT  
PLATE MATERIAL Alloy 316  
PLATE GROUPING 1\*6H/1\*6H

T1 T2 T3 T4 locations on back side  
correspond to S1 S2 S3 S4 on front side

ALL DIMENSIONS IN MILLIMETERS

SIDE	MEDIA	INLET	TEMP.	OUTLET	TEMP.	FLOW RATE	PRESSURE DROP	LIQUID VOL.
1								0.16 dm <sup>3</sup>
2								0.16 dm <sup>3</sup>

PRESSURE VESSEL APPROVAL

PED

CBH16-13H (3287087069)

[www.alfalaval.com](http://www.alfalaval.com)

CUSTOMER NAME / REF. NO.

COMPANY / REF.

TOTAL LENGTH 54.1 mm  
TOTAL WIDTH 73.5 mm  
TOTAL HEIGHT 209.5 mm

5/24/2021  
REV 0